



# GEE GE STRUCTURALS PVT LTD

( Builders & Promoters)



## GEE GE VISTA C BLOCK



### Site Address

Plot No 6 & 14 Argeeswarar Colony,  
6th Street, Chromepet, Pammal, Chennai 44



C. Thenappan

9380607435 | 9790966630

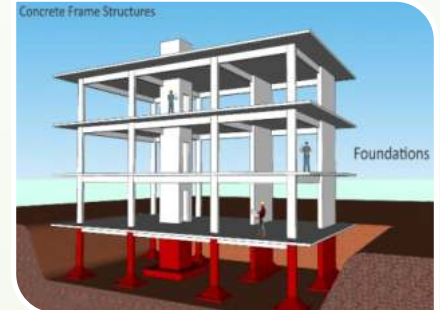
visit our location

Press Me

## SPECIFICATIONS FOR FLATS

### Structure

- ▶ RCC framed structure with RCC foundation
- ▶ Anti-termite treatment
- ▶ 9 inches brickwork for outer wall and 4.5 inches brickwork for Internal partition wall.
- ▶ Ceiling height will be maintained at 9'-6" feet slab to slab
- ▶ Foundation height is 3 feet from Ground level



### Wall Finish

- ▶ Internal wall in the living, dining, bedrooms, kitchen and lobby will be finished with 2 coats of putty, 1 coat of primer, 2 coats of tractor emulsion
- ▶ Ceiling will be finished with cement paint
- ▶ Exterior front faces of the building will be finished with Asian Apex Durocross texture paint with 1 coat of primer and 2 coats of Ultima.
- ▶ Exterior other three sides of the building will be finished with 1 coat of primer, and 2 coats of ACE.
- ▶ Utility & toilets will be finished with 2 coats of putty, 1 coat of primer and 2 coats of cement paint.
- ▶ Toilet walls will be finished with glazed ceramic tiles up to lintel from finished floor level.
- ▶ Utility walls will be finished with glazed ceramic tiles up to 4 feet from finished floor level.
- ▶ Kitchen dado tiles up to 2 feet height from granite slab

## SPECIFICATIONS FOR FLATS

### Flooring

- ▶ Living, dining, kitchen and bedrooms will have 2 X 2 feet vitrified tile flooring at cost of Rs.35/- per sqft
- ▶ Toilet will have Anti skid ceramic tile flooring at the cost of Rs.24/- per sqft
- ▶ Bathroom, balcony will have rustic finish ceramic tile
- ▶ Driveway and other areas will be laid with parking area tile
- ▶ Staircase will have Granite
- ▶ Terrace-floor will have Red kerala type tiles with vermiculite for cooling.

### INTERIOR WORKS

- ▶ Providing False ceiling in Hall
- ▶ Modular Kitchen with Faber Chimney and Faber Hob with Suction Power 1100m<sup>3</sup>/Hr.
- ▶ Covered Wardrobe and Loft will be provided in Bedrooms
- ▶ Providing Bathroom Accessories.



### Kitchen

- ▶ Platform will be done with granite slab 2 feet wide at a height of 32 inches from the floor level and will be provided with stainless steel sink with drain board
- ▶ Provision for water purifier
- ▶ CP fittings will be Parryware





## SPECIFICATIONS FOR FLATS

### Bathrooms

- ▶ One Parryware wash basin in a convenient space.
- ▶ Floor mounted Parryware W/C with health faucet.
- ▶ Concealed wall mixer Parryware.
- ▶ Provision for geyser.
- ▶ CP fittings will be Parryware.



### Entrance Door

- ▶ Main door will be of Teak wood of 7 feet height with tower bolt, door viewer, safety latch, door stopper and Godrej or equivalent lock

### Bedroom Door

- ▶ Good quality water- proof flush door with WPC frame of 7 feet height having good quality locks.



### Balcony Door

- ▶ Water proofing door of 7 feet height having Tower bolt, handle with good quality lock , door stopper etc.

### Bathroom Door

- ▶ Chemically treated doors of 7 feet height with enamel finish.



### Windows

- ▶ UPVC Windows with see-through pin headed glass and MS grills on inner side
- ▶ UPVC French doors with toughened glass will be provided with grills
- ▶ For ventilators, UPVC frame and suitable louvered glass panes



## SPECIFICATIONS FOR FLATS

### Electrical Fittings

- ▶ Orbit cables and wiring
- ▶ Orbit Switches and sockets
- ▶ Telephone and DTH provision will be provided in living room
- ▶ Air-conditioner points will be provided in all bedroom
- ▶ Modular plate switches, MCB and ELCB (Earth leakage circuit breaker) System
- ▶ Electrical Fittings : Fan 1 No , Tube Light 6 No, Fancy Light 4 Nos.
- ▶ Hall : Two fan points , Three Light points , Two 5 amps plug points, one T.V point, one Telephone point and inverter point.
- ▶ Bedrooms : One fan point , Two Light points , A/c point in both Bedrooms and one 5 amps Plug point.
- ▶ Kitchen : One fan point , Two Light points , One 5 amps and One 15 amps Plug point.
- ▶ Dining point : One fan point , Two Light points , One 5 amps Plug point.
- ▶ Toilet : One Light and one 15 amps Plug point.

### Others

- ▶ Overhead Tank for borewell and Sump water each of 1500 Ltrs Capacity
- ▶ Sump capacity of 14000 Ltrs.
- ▶ S.S Handrails in Staircase.
- ▶ Safety grill gates for all Main Doors
- ▶ Safety grill gates for terrace and common main entrance
- ▶ Inverter Provision



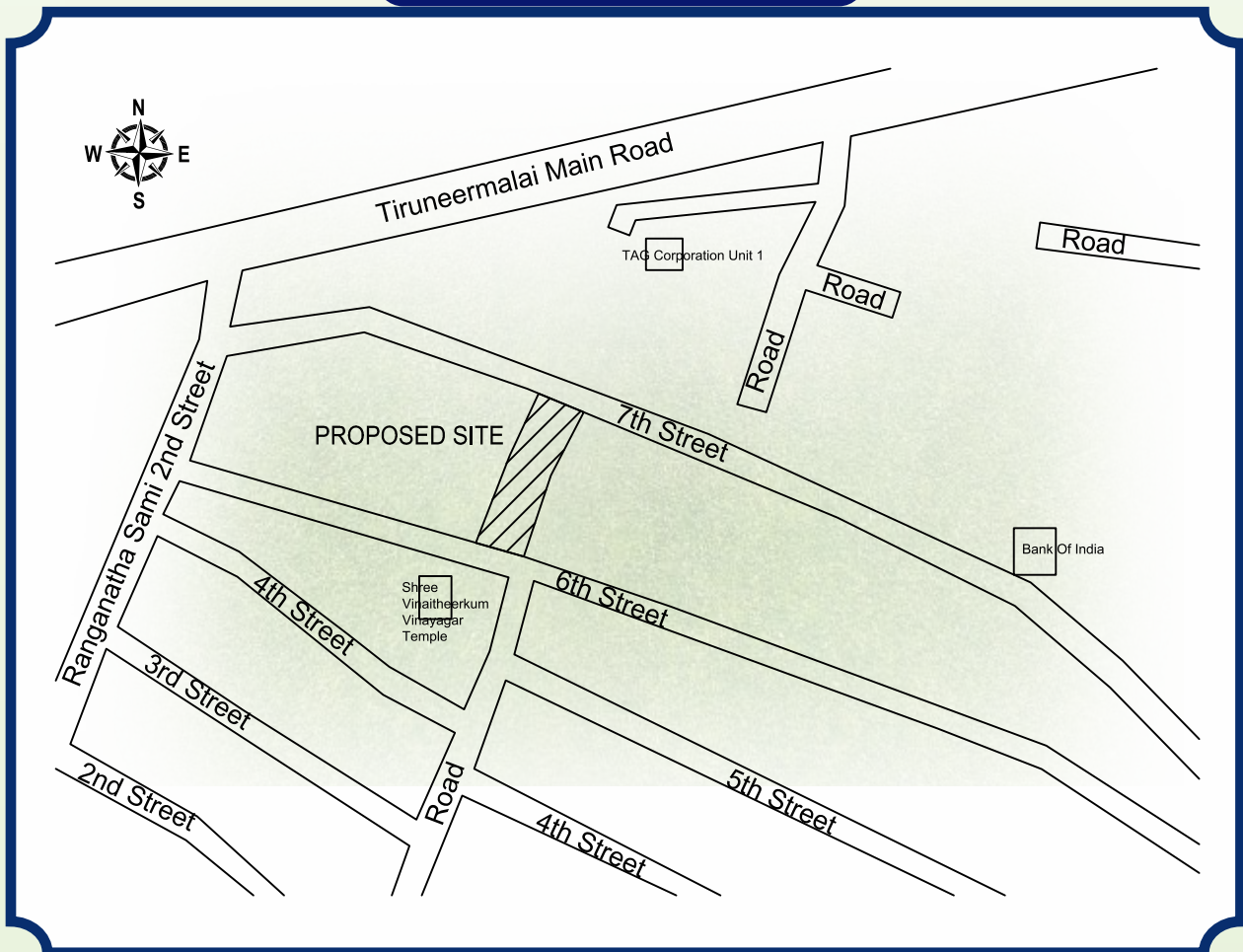
### External Feature

- ▶ Power Supply: 3-phase power supply will be provided for all flats

## Special Features

- ▶ Easy access to Chennai International Airport , Railway station, bus stand and Hospitals .
- ▶ 24 hours Ground water Supply.
- ▶ Car parking facility.
- ▶ Close proximity to leading schools
- ▶ Followed by the Ancient Science of ' Vaastu ' and its benefits.
- ▶ Design and location of Furniture, Electrical fittings and Toilet fixtures are preplanned to use the available space effectively and efficiently.
- ▶ All bedrooms are provided with Built-in wardrobes and lofts.
- ▶ Loans arranged through all leading financial Institutions .., SBI, HDFC and LIC

## KEY PLAN

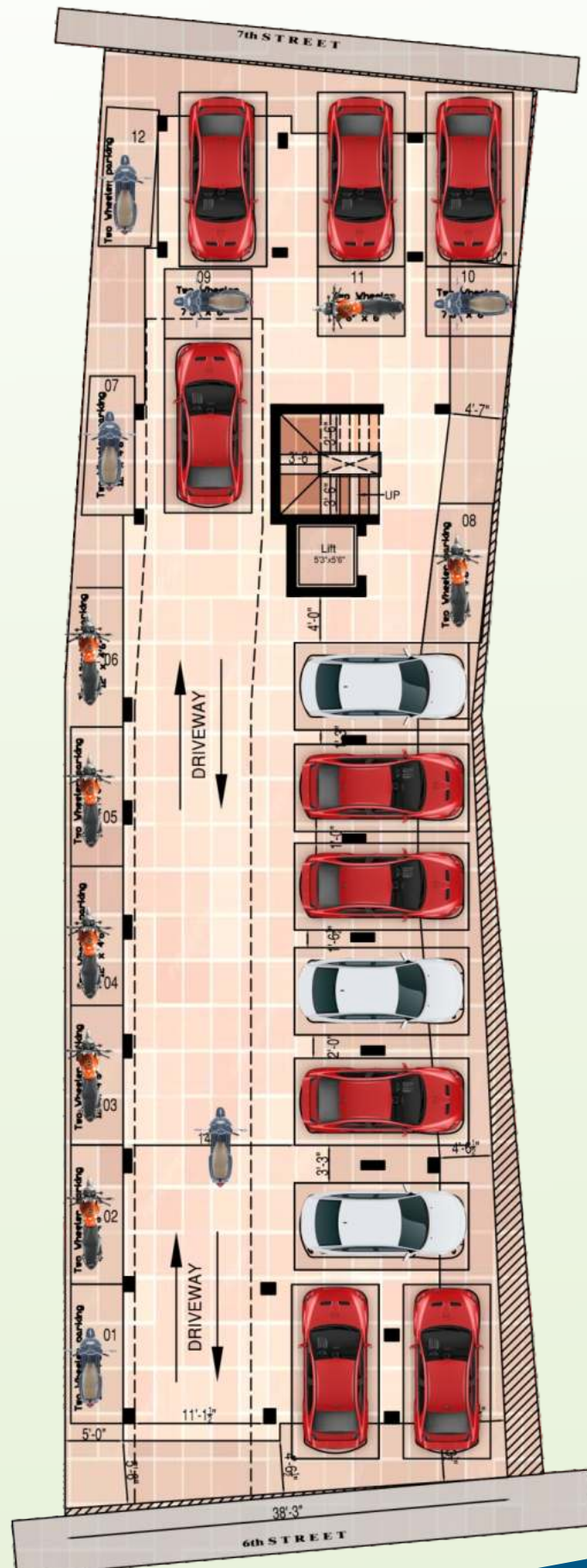


## GEE GE VISTA C-BLOCK



**GEE GE STRUCTURALS PVT LTD**  
(Builders & Promoters)

## STILT FLOOR







**GEE GE STRUCTURALS PVT LTD**  
(Builders & Promoters)

## TYPICAL PLAN







**F1/S1/T1 (NORTH FACING)**

PLINTH AREA : 640sqft

FLAT AREA: 800sqft





**F2/S2/T2 (EAST FACING)**

PLINTH AREA : 592sqft

FLAT AREA: 740sqft





### F3/S3/T3 (EAST FACING)

PLINTH AREA : 628sqft

FLAT AREA: 785sqft



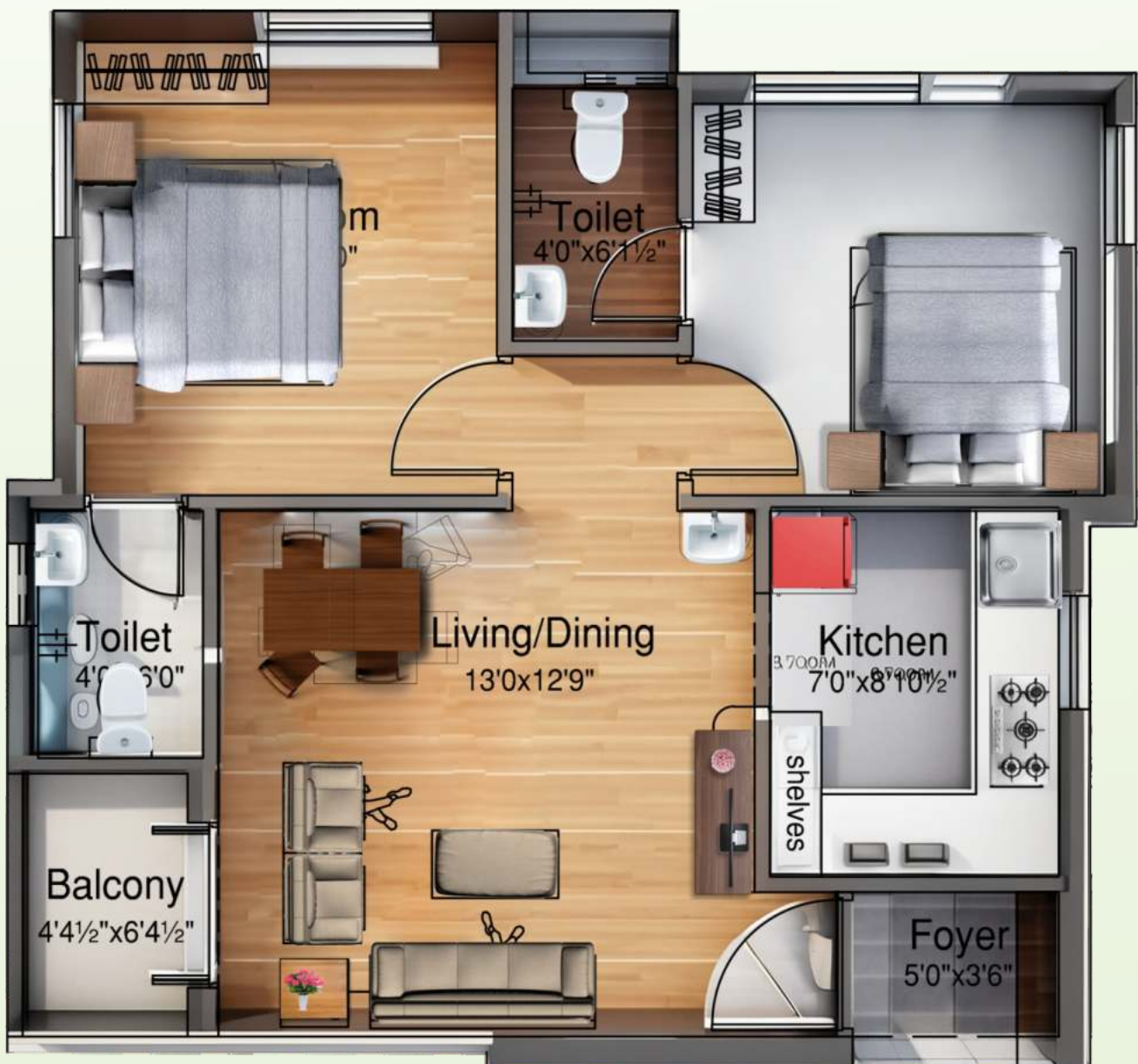




### F4/S4/T4 (EAST FACING)

PLINTH AREA : 652sqft

FLAT AREA: 815sqft



**GEE GE STRUCTURALS PRIVATE LIMITED****BUILDERS & PROMOTERS****GEE GE VISTA - C BLOCK**

<b>Guide Line Value</b>	<b>2500</b>	<b>Plot No. 6 &amp; 14</b>
<b>Total Constructed Area</b>	<b>9420</b>	<b>ARGEESWARAR COLONY STREET</b>
<b>Land Area</b>	<b>4469</b>	<b>CHROME PET, PAMMAL</b>
<b>U.D.S</b>	<b>0.4744</b>	<b>CHENNAI 44</b>
<b>Rate (sqft) Rs Flat Area</b>	<b>6400</b>	
<b>rate (sqft) Rs Interiors</b>	<b>1000</b>	

**\*INTERIOR WORKS INCLUDES :****1.Modular kitchen with faber chimney and faber hob****2.Wardrobe****3.Wooden Loft****4.Fan and Light Fittings****5.Bathroom Accessories****FIRST & SECOND FLOOR RATE DETAILS**

Flat No	Main Door Facing	Plinth Area	Flat Area (Sqft)	U.D.S (Sqft)	COST OF BUILDING		Registration Cost	Drainage & Water Line	EB (3 Phase)	TOTAL	STATUS
					Cost of U.D.S	Construction Cost (Inclusive Car Parking & Interior)					
<b>F1/S1</b>	<b>NORTH</b>	<b>640</b>	<b>800</b>	<b>380</b>	<b>950000</b>	<b>4970000</b>	<b>439400</b>	<b>75000</b>	<b>75000</b>	<b>6509400</b>	<b>Available</b>
<b>F2/S2</b>	<b>EAST</b>	<b>592</b>	<b>740</b>	<b>351</b>	<b>877500</b>	<b>4598500</b>	<b>408320</b>	<b>75000</b>	<b>75000</b>	<b>6034320</b>	<b>Available</b>
<b>F3/S3</b>	<b>EAST</b>	<b>628</b>	<b>785</b>	<b>372</b>	<b>930000</b>	<b>4879000</b>	<b>431630</b>	<b>75000</b>	<b>75000</b>	<b>6390630</b>	<b>Available</b>
<b>F4/S4</b>	<b>EAST</b>	<b>652</b>	<b>815</b>	<b>387</b>	<b>967500</b>	<b>5063500</b>	<b>447170</b>	<b>75000</b>	<b>75000</b>	<b>6628170</b>	<b>Available</b>

**THIRD FLOOR RATE DETAILS**

<b>T1</b>	<b>NORTH</b>	<b>640</b>	<b>800</b>	<b>380</b>	<b>950000</b>	<b>4970000</b>	<b>439400</b>	<b>75000</b>	<b>75000</b>	<b>6509400</b>	<b>Available</b>
<b>T2</b>	<b>EAST</b>	<b>592</b>	<b>740</b>	<b>351</b>	<b>877500</b>	<b>4598500</b>	<b>408320</b>	<b>75000</b>	<b>75000</b>	<b>6034320</b>	<b>Available</b>
<b>T3</b>	<b>EAST</b>	<b>628</b>	<b>745</b>	<b>372</b>	<b>930000</b>	<b>4583000</b>	<b>410910</b>	<b>75000</b>	<b>75000</b>	<b>6073910</b>	<b>Available</b>
<b>T4</b>	<b>EAST</b>	<b>652</b>	<b>815</b>	<b>386</b>	<b>965000</b>	<b>5066000</b>	<b>447170</b>	<b>75000</b>	<b>75000</b>	<b>6628170</b>	<b>Available</b>

**GEE GE VISTA C BLOCK**



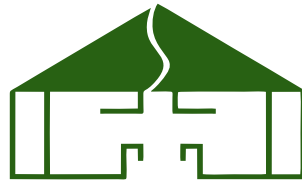
**VISIT OUR LOCATION**

**Press Me**



**Site Address**

**Plot No 6 & 14 Argeeswarar Colony,  
6th Street, Chromepet,  
Pammal, Chennai 44**



**GEE GE STRUCTURALS PVT LTD**  
**( Builders & Promoters )**

**No. 1 Kamarajar Nedun Salai, Muthamizhi Nagar,  
Pammal, Chennai-600 075**

**☎ 9380607435 | 9790966630**

**✉ geegestructurals@yahoo.com**

**🌐 www.geegestructurals.in**

**visit our website**

**Press Me**